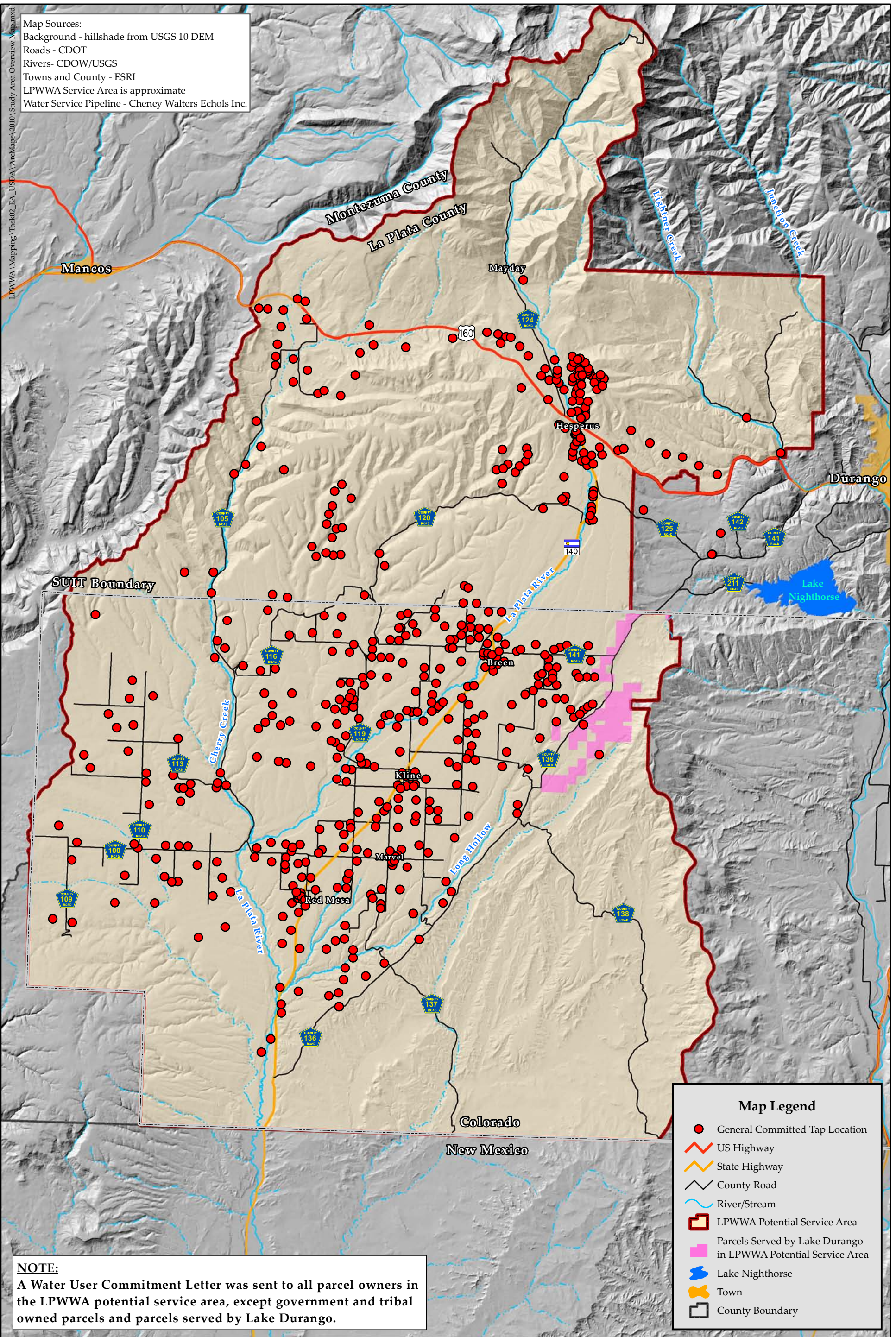


Map Sources:
 Background - hillshade from USGS 10 DEM
 Roads - CDOT
 Rivers - CDOW/USGS
 Towns and County - ESRI
 LPWWA Service Area is approximate
 Water Service Pipeline - Cheney Walters Echols Inc.



NOTE:
 A Water User Commitment Letter was sent to all parcel owners in the LPWWA potential service area, except government and tribal owned parcels and parcels served by Lake Durango.

Map Legend

- General Committed Tap Location
- US Highway
- State Highway
- County Road
- River/Stream
- LPWWA Potential Service Area
- Parcels Served by Lake Durango in LPWWA Potential Service Area
- Lake Nighthorse
- Town
- County Boundary